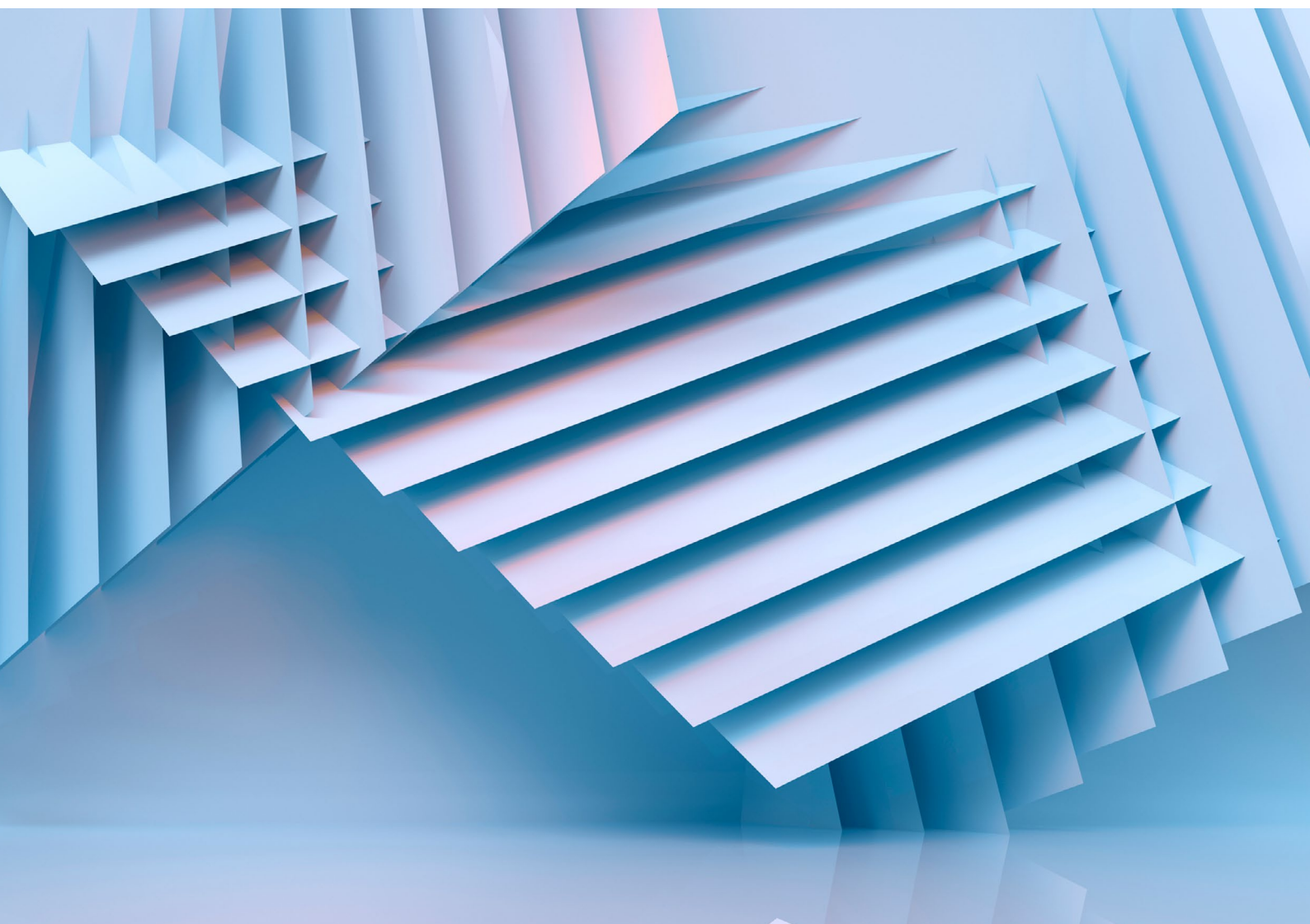


Plastic packaging – Assessment of recycled content within polyethylene terephthalate (PET) virgin material and recyclate blended packaging materials produced from mechanical recycling methods – Specification and test methods

April 2022 Version 2



BSI Flex 6228: v2.0 2022-04

Publishing and copyright information

The BSI copyright notice displayed in this document indicates when the document was last issued.

© The British Standards Institution 2022.

Published by BSI Standards Limited 2022.

ICS: 55.020 Packaging and distribution of goods in general

83.080 Plastics

83.080.01 Plastics in general

No copying without BSI permission except as permitted by copyright law.

BSI's Flex Standards provide a new, flexible way to develop consensus-based good practice that dynamically adapts to keep pace with fast-changing markets. For more information, go to: <https://www.bsigroup.com/en-GB/our-services/standards-services/flex/>

Version history

First version March 2022.

Second version April 2022.

Contents

Foreword	ii
0 Introduction	iv
1 Scope	1
2 Normative references	2
3 Terms, definitions and abbreviations	3
4 Measurement	4
5 Calculations	5
6 Test report	7
Annexes	
Annex A (normative)	
Measurement of the transmission at a specified wavelength by UV/visible spectroscopy	8
Annex B (normative)	
Measurement of the crystallization temperature on cooling	10
Annex C (normative)	
Measurement of tristimulus property L* by Colorimetry	11
Annex D (informative)	
Discussion of the reliability of the rPET>30% probability estimate	12
Annex E (informative)	
Discussion of variability and reliability of sample recycle content inferred from 350nm UV-vis absorbance measurements of sample and feedstock (virgin & 100% recycled) materials.	13
Bibliography	16
List of figures	
Figure E.1 – Model-based recycled content estimates for a range of specimens plotted against their actual recycle values. Prediction bands (at the 95% confidence level) are shown	13
Figure E.2 – Inference-based recycled contents for a range of specimens plotted against their actual recycle values. Prediction bands (at the 95% confidence level) are shown	14
List of tables	
Table A.1 – Results table for UV-vis transmission	9
Table B.1 – Results table for the crystallization temperature estimation of recycled content of a PET sample	10
Table C.1 – Results table for a colorimetric estimation of recycled content of a PET sample	11
Table D.1 – Confusion matrix for >30% probability-based predictions on training set	12
Table D.2 – Confusion matrix for >30% probability-based predictions on validation set	12
Table E.1 – The average inferred value and associated upper and lower prediction levels (UPL and LPL) for a range of recycle levels based on results from formulated film samples	15